



MINO 40

surface

EN Luminaire housing from extruded aluminium profile, angular design; no visible screws; surface powder coated; luminaire profile can be pre-mounted; remaining luminaire components mounted without tools; light inset consisting of highly reflective coated extruded profile for improved thermal management; HPO (High Performance Opal) cover for uniform illumination; energy-efficient LEDs with very good colour rendering

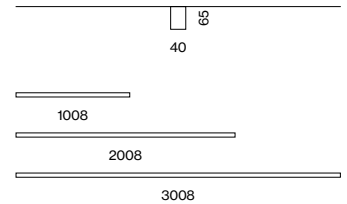
FR Corps de luminaire en profil extrudé en alu, version arête ; aucune vis visible ; surface thermolaquée ; profilé de luminaire pouvant être monté à l'avance ; composants restants du luminaire montable sans outil ; élément lumineux composé de profilé extrudé laqué hautement réfléchissant pour une gestion thermique améliorée ; cache HPO (High Performance Opal) pour éclairage homogène ; LED économes en énergie à restitution de couleur élevée

Quickinfo

3000K, 4000K
 CRI ≥ 90, 3 SDCM
 up to 130lm/W
 L90 @ 50000h
 DALI-2
 opal, microprismatic

Types

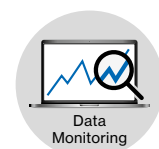
surface



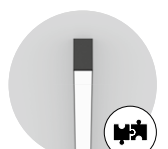
Colours



Light distribution



DiiA® standards
 251, 252, 253



system
 solution

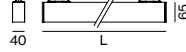
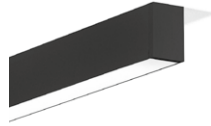
Order options

COLOUR TEMPERATURE	
3000K	0
4000K	1

CONTROL	
DALI-2	

MATERIAL COLOUR	
<input type="radio"/> pure white RAL 9010	7
<input type="radio"/> traffic white RAL 9016	W
<input checked="" type="radio"/> white aluminium RAL 9006	G
<input type="radio"/> jet black RAL 9005	8

LIGHT OPTIC COVER	
opal high performance	H
microprismatic	Z



MINO 40 surface



MID LUMEN

SYS. POWER	COLOUR TEMP.	LUM. FLUX	L (mm)	ORDER CODE
12.1W	3000K	1360lm	1008	0 4 2 - 1 1 1 2 :: 3 <input checked="" type="checkbox"/> <input type="checkbox"/>
	4000K	1470lm		
23.4W	3000K	2720lm	2008	0 4 2 - 1 1 1 4 :: 3 <input checked="" type="checkbox"/> <input type="checkbox"/>
	4000K	2940lm		
34W	3000K	4080lm	3008	0 4 2 - 1 1 1 6 :: 3 <input checked="" type="checkbox"/> <input type="checkbox"/>
	4000K	4410lm		

HIGH LUMEN

SYS. POWER	COLOUR TEMP.	LUM. FLUX	L (mm)	ORDER CODE
18.5W	3000K	2100lm	1008	0 4 2 - 1 1 2 2 :: 3 <input checked="" type="checkbox"/> <input type="checkbox"/>
	4000K	2260lm		
36W	3000K	4190lm	2008	0 4 2 - 1 1 2 4 :: 3 <input checked="" type="checkbox"/> <input type="checkbox"/>
	4000K	4530lm		
54W	3000K	6290lm	3008	0 4 2 - 1 1 2 6 :: 3 <input checked="" type="checkbox"/> <input type="checkbox"/>
	4000K	6790lm		